



## Submittal Data Sheet

4.0 Ton R-32 VRV-S Heat Pump

RXTA48AAVJU

### FEATURES

- Expanded line up with 2 to 5 ton offering.
- Extended piping capability with vertical separation up to 164ft and total pipe length up to 984 ft.
- Simplicity in design and installation with compact and space saving single fan chassis size, across all tonnages, allows the unit to be installed in tight spaces.
- Compact height of 34-1/4 enables the unit to be tucked under in most ledge/balcony applications
- Efficient operation and year-round energy savings through Smart Variable Refrigerant Temperature (VRT) technology
- Improved efficiencies in heating and cooling operation compared to R-410A lineup
- Quiet operation with sound levels as low as 56 dB(A)
- Ease of retrofit of existing R-410A installation with ability to re-use larger diameter refrigerant pipes via field setting
- Optional base pan heater to defrost base pan in cooler climate applications
- Increased nominal capacity for 5 ton unit to 60,000 Btu/hr
- New 7 segment display for easier access to field setting



### BENEFITS

- Single-phase technology enables installation in light commercial and residential applications
- Broader diversity with up to 9 indoor units connectivity
- Space saving compact design
- Design flexibility with long piping lengths up to 984ft total and 49ft vertical separation between indoor units
- Designed with reduced MOP to optimize installation costs



## Submittal Data Sheet

4.0 Ton R-32 VRV-S Heat Pump

RXTA48AAVJU

### PERFORMANCE

Outdoor Unit Model No.	RXTA48AAVJU	Outdoor Unit Name:	4.0 Ton R-32 VRV-S Heat Pump
Type:	Heat Pump		
Rated Cooling Conditions:	Indoor (°F DB/DB): 80 / 67 Ambient (°F DB/WB): 95 / 75	Rated Heating Conditions:	Indoor (°F DB/WB): 70 / 60 Ambient (°F DB/WB): 47 / 43
Rated Piping Length(ft):			
Rated Height Difference (ft):	49.00		
Cooling Capacity (Rated/Non-Ducted/Ducted) (Btu/hr):	/ 45,500 / 45,000	Heating Capacity (Rated/Non-Ducted/Ducted) (Btu/hr):	/ 46,000 / 47,500
Cooling Input Power (kW):	Heating Input Power (kW):		
EER2 (Non-Ducted/Ducted):	12.00 / 9.00	SEER2 (Non-Ducted/Ducted):	20.00 / 16.00
HSPF2 (Non-Ducted/Ducted):	9.5 / 8.5	Heating COP (Non-Ducted/Ducted):	

### OUTDOOR UNIT DETAILS

Power Supply (V/Hz/Ph):	208/230 / 60 / 1	Compressor Stage:	Inverter
Power Supply Connections:	L1, L2, G	Capacity Control Range (%):	14 - 100
Min. Circuit Amps MCA (A):	29.4	Airflow Rate (H) (CFM):	3000
Max Overcurrent Protection (MOP) (A):	30	Gas Pipe Connection (inch):	5/8
Max Starting Current MSC(A):		Liquid Pipe Connection (inch):	3/8
Fan/Compressor Drive Input:	22.8	Sound Pressure (H) (dBA):	56
Dimensions (HxWxD) (in):	34-1/4 x 43-5/16 x 18-1/8	Sound Power Level (dBA):	74
Net Weight (lb):	220		

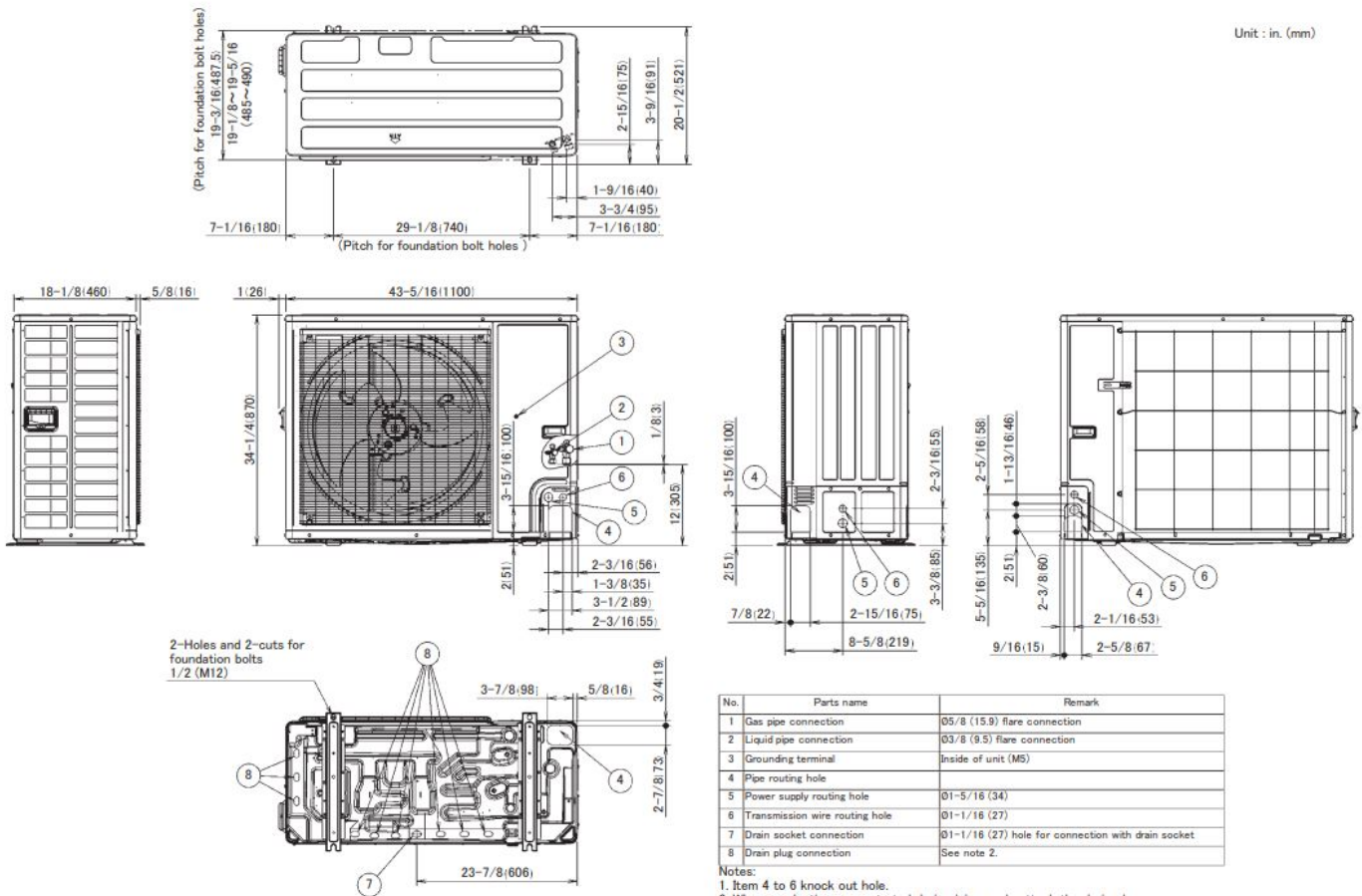
**Submittal Data Sheet**  
**4.0 Ton R-32 VRV-S Heat Pump**  
**RXTA48AAVJU**

**SYSTEM DETAILS**

Refrigerant Type:	R-32	Cooling Operation Range (°F DB):	23 - 122
Holding Refrigerant Charge (lbs):	7.5	Heating Operation Range (°F WB):	-4 - 60
Additional Charge (oz/ft):		Max. Pipe Length (Vertical) (ft):	164
Pre-charge Piping (Length) (ft):		Cooling Range w/Baffle (°F DB):	-
Max. Pipe Length (Total) (ft):	984		
Max Height Separation (Ind to Ind ft):	49		
Fan/Compressor Drive Input:	22.8		

**DIMENSIONAL DRAWING**

Unit : in. (mm)



No.	Parts name	Remark
1	Gas pipe connection	05/8 (15.9) flare connection
2	Liquid pipe connection	03/8 (9.5) flare connection
3	Grounding terminal	Inside of unit (M5)
4	Pipe routing hole	
5	Power supply routing hole	Ø1-5/16 (34)
6	Transmission wire routing hole	Ø1-1/16 (27)
7	Drain socket connection	Ø1-1/16 (27) hole for connection with drain socket
8	Drain plug connection	See note 2.

Notes:  
 1. Item 4 to 6 knock out hole.  
 2. When conducting concentrated drain piping work, attach the drain plugs.